

PROPRIETÀ:
CL.A.R.O. S.A.S

3GI SOCIETÀ SEMPLICE

WEST IMMOBILIARE S.R.L.

AREA IMMOBILIARE S.R.L.

AVENTI CAUSA DI
CHIAVASSA RENATO

AVENTI CAUSA DI
BALLARI GIUSEPPE

MORESCO MADDALENA

AVENTI CAUSA DI
BECCARIA RENATO

COLLABORATORE:
ARCH. LUIS ANDRES VALENCIA VASQUEZ

GEUNA ARCHITETTI
 URBANISTICA EDILIZIA
 ARCHITETTURA PAESAGGISTICA
 INTERIORE ARREDO D'INTERIO
 10060 OSASCO
 VIA CHISSONE N.13
 TELEFONO 0121 641302
 FAX 0121 991100
 posta@studiogeuna.eu
 www.studiogeuna.eu
 N. iscr. 1372
 C.F. 03615320126 0674P
 P.IVA: 07394900016

SIG. AMARETTI CLAUDIO LEGALE
 RAPPRESENTANTE CL.A.R.O. S.A.S

SIG. AMARETTI CLAUDIO LEGALE
 RAPPRESENTANTE 3GI SOCIETÀ SEMPLICE

SIG. GEMME MAURIZIO AMMINISTRATORE
 UNICO WEST IMMOBILIARE S.R.L.

SIG. GEMME MAURIZIO AMMINISTRATORE
 UNICO AREA IMMOBILIARE S.R.L.

SIG. CHIAVASSA MAURO

SIG. CHIAVASSA FLAVIO

SIG. BALLARI GIACOMO

SIG. RA BALLARI MARIA TERESA

SIG. RA BALLARI DOMENICA

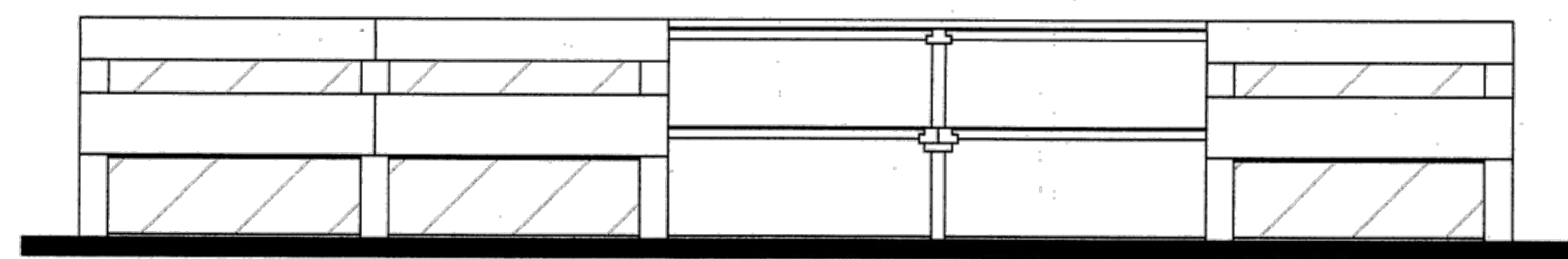
SIG. RA MORESCO MADDALENA

SIG. BECCARIA DOMENICO

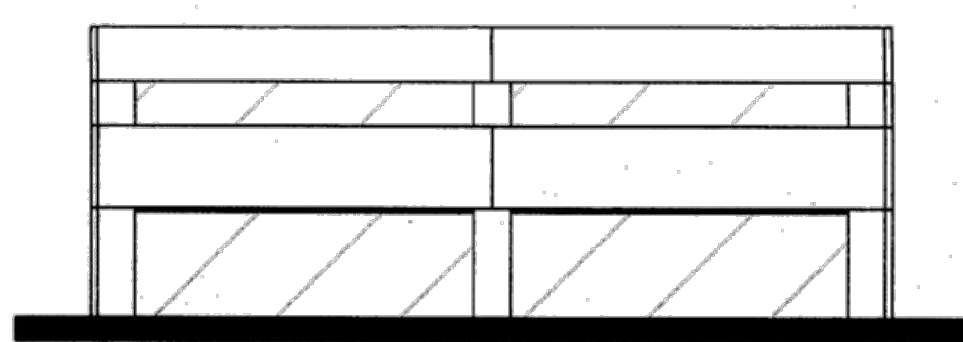
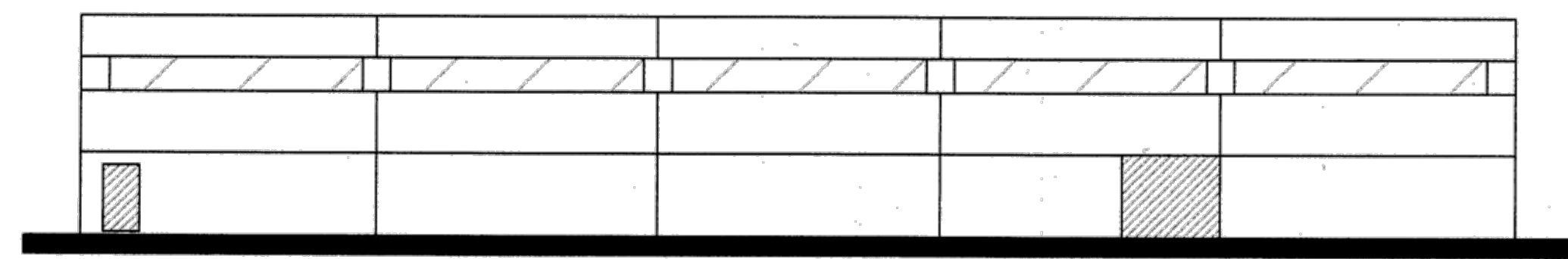
SIG. RA BECCARIA ENRICA

SIG. RA RISSONE GIULIA

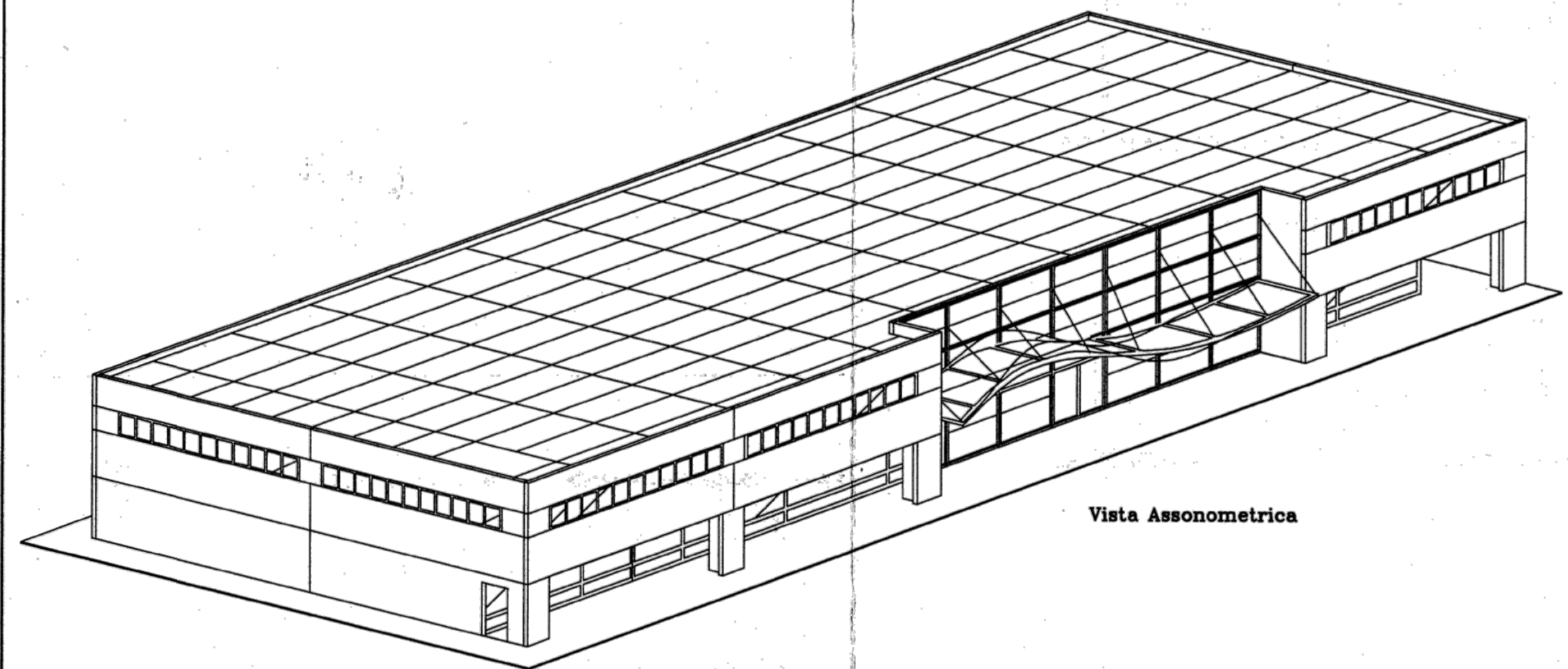
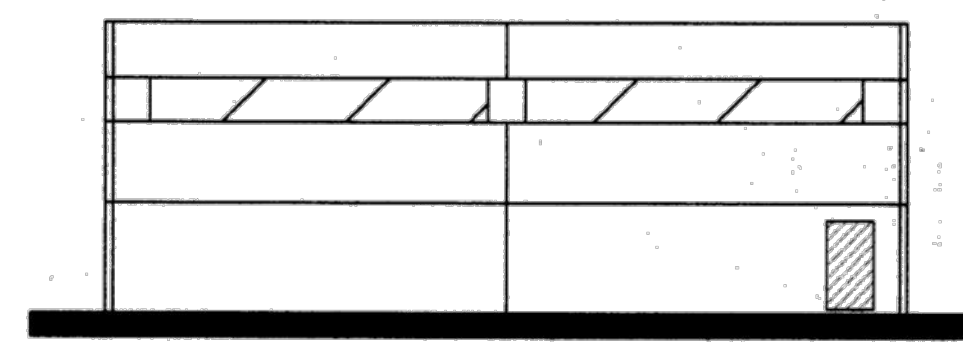
N° COMMESA	LIVELLO DI PROGETTAZIONE	TITOLO	N° ELAB.	INDICE DI MODIFICA	OBBIETTO	INDIZIA	DATA	DISEGNATORE
GG22_02	VAR-2-PEC	PROT	TAV_15A	00			MAGGIO 2024	G.C. - L.A.V.V.



Prospetti Tipo

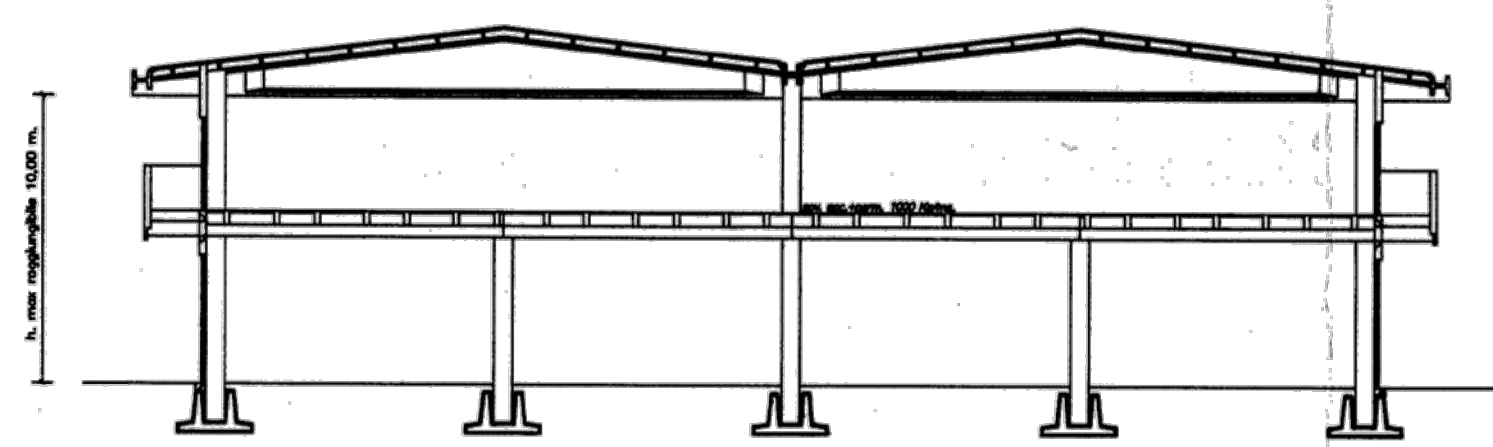


Prospetti Tipo

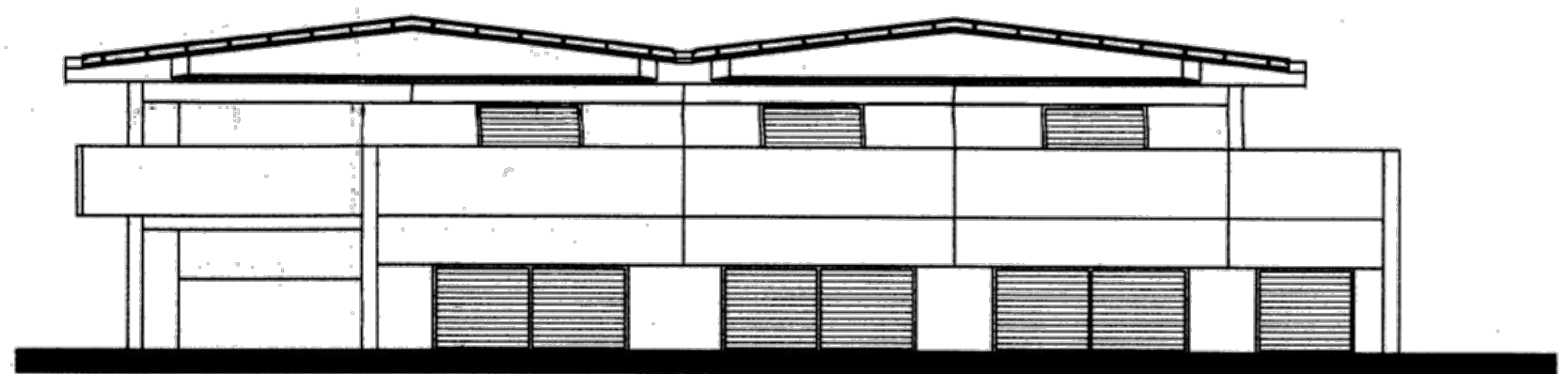
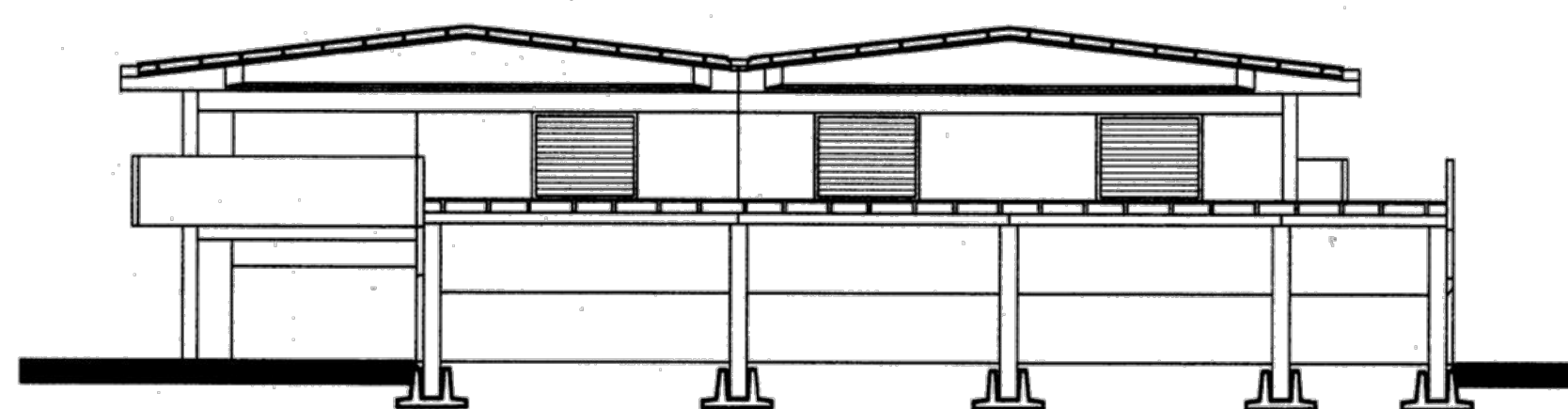


Vista Assonometrica

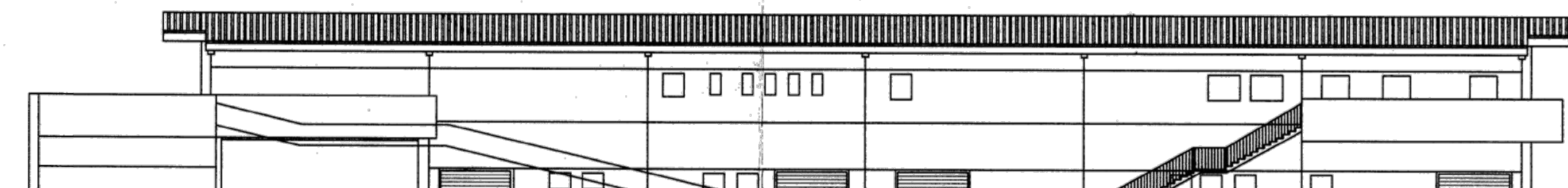
SCHEMA TIPO C



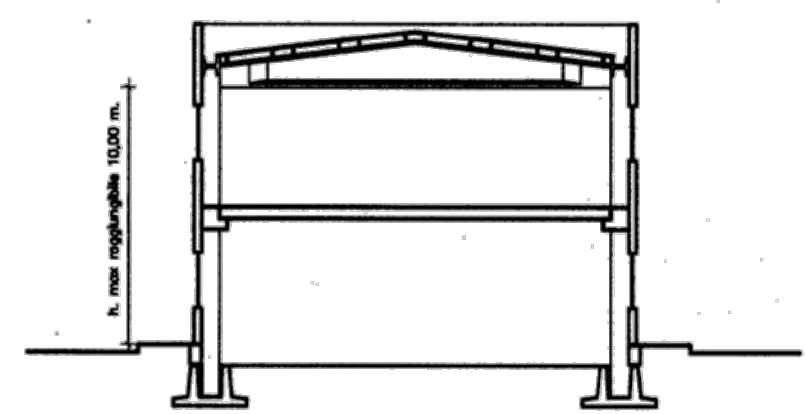
Sezione Tipo



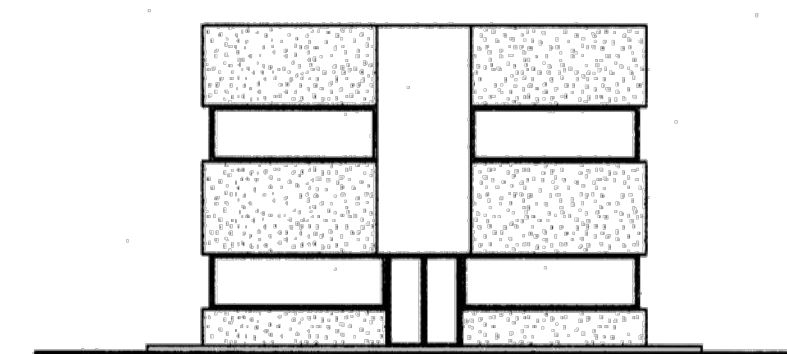
Prospetti Tipo



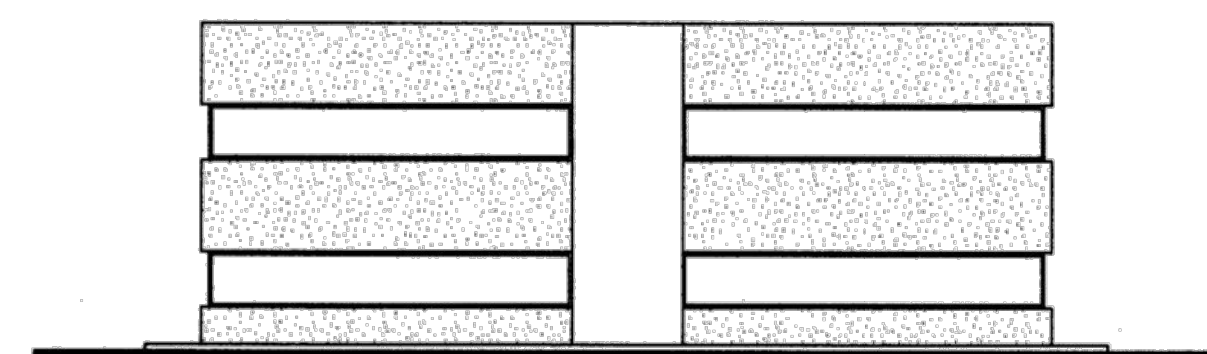
SCHEMA TIPO D



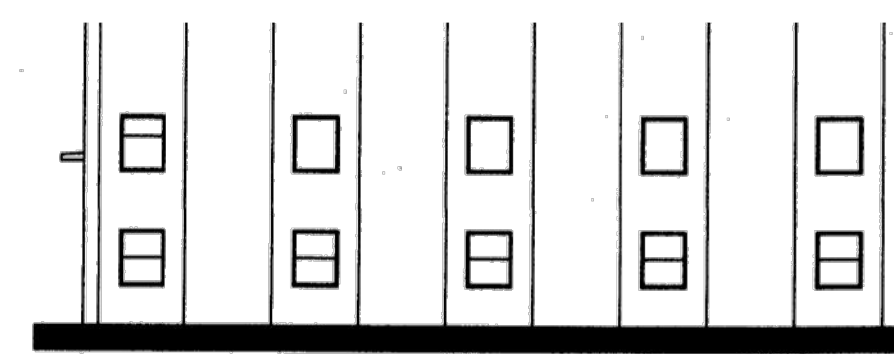
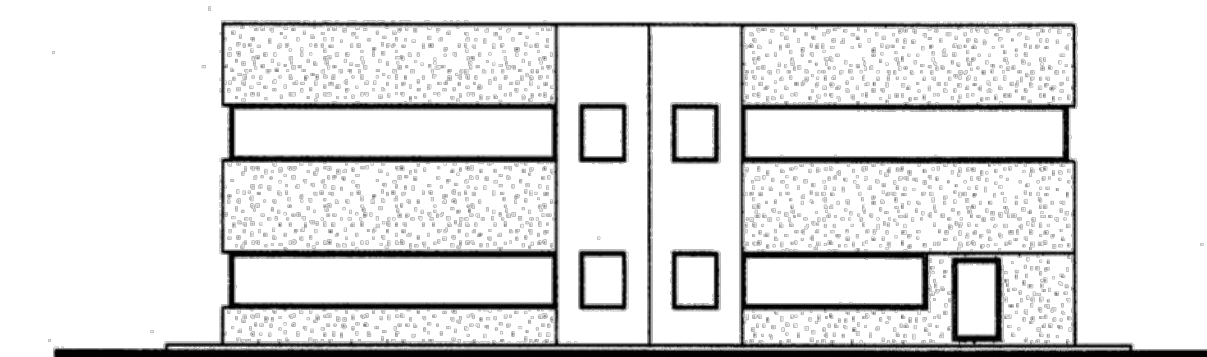
Sezione Tipo



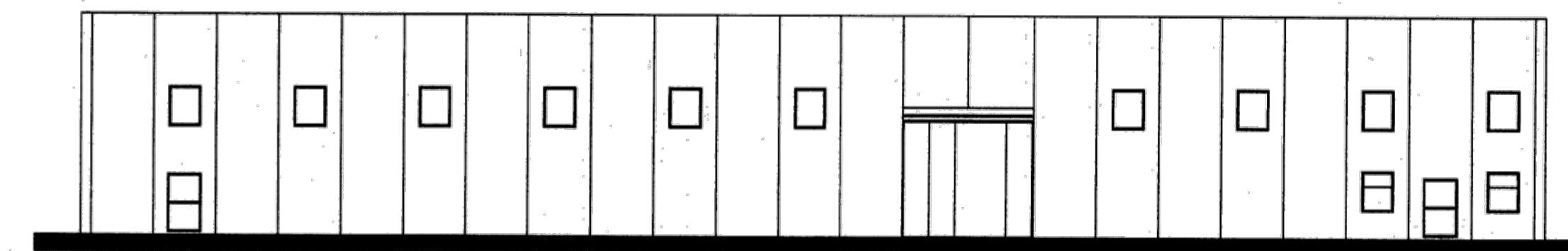
Prospetti Tipo



Prospetti Tipo



Prospetti Tipo



Prospetti Tipo

